



Features & Benefits

- System View - Displays the operating conditions of your compressed air system, including pressure, motor status, and alarm status.
- Complete Remote Control - BayView 20/20 allows complete remote control over every compressor on the network: starting and stopping, capacity changes, networking parameters and pressure setpoint changes.
- Compressor View - Display the current readings of the major monitoring points, while showing the user graphically where the points are located on the unit.
- Monitoring Points List - Shows the complete list of all monitoring points, alarm and trip values, and current status.
- Alarm and Trip Logs—Keeps a history of all alarm and trip readings that occur and displays them in a tabular format.
- Operational History - Captures vital data generated by each compressor, with extensive report generating capabilities. These reports allow you to track compressor performance over time and spot trends before they become problems. The generated reports can be displayed on the screen or printed. This comprehensive data management forms the basis for a strong predictive and preventative maintenance program.

Energy Solutions with BayView

Bay's products and services help our customers realize complete energy solutions for their energy intensive production and process operations. Reduced costs and increased management productivity are two of our primary goals. Our strategy creates a total system solution, using control, monitoring, analysis, integration and automation as the central features.

BayView 20/20 is the pinnacle of your air compressor control network, providing an integrated computer management solution for compressed air systems. Designed for use with the ProTech and Vantage series of compressor controllers, BayView 20/20 is a comprehensive network software package that delivers management and control of your compressors to your desktop.

BayView 20/20 runs on the Microsoft Windows XP platform, making it both extremely easy to use and compatible with other applications on a standard PC workstation. We have the ability to integrate BayView 20/20 into your existing Wonderware, Intellution or RSView plant-wide HMI system.

Your Compressor Network

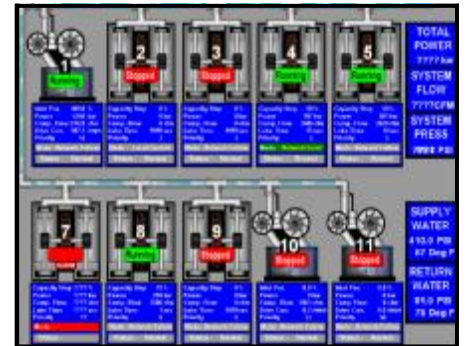
With BayView 20/20, a Microsoft Windows XP PC is connected to all of your ProTech and Vantage controllers, forming your own plant compressor intranet. With the click of a mouse, BayView 20/20 allows for complete system control, monitoring, and information management. From the system view to the individual compressor view, you have the real-time conditions of your entire compressed air system at your fingertips.

Remote Compressor Control

For the individual compressors on the network, BayView 20/20 offers many of the same features that are available from the compressor control panel: change setpoints, monitor current conditions and view operating and protection conditions. With BayView 20/20 you have control, all in real-time on your desktop computer.

One More Innovation to Help You

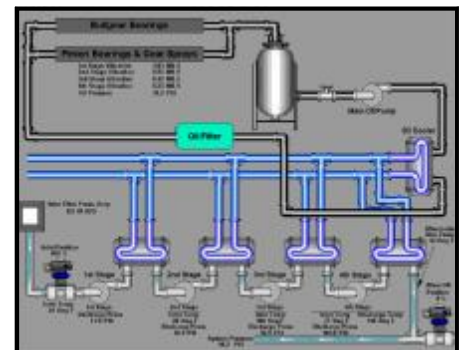
BayView 20/20 is another innovative product from Bay Controls to help you realize a complete energy solution for your compressed air system. Contact your representative for a demonstration of BayView 20/20 or more information on the complete line of our products.



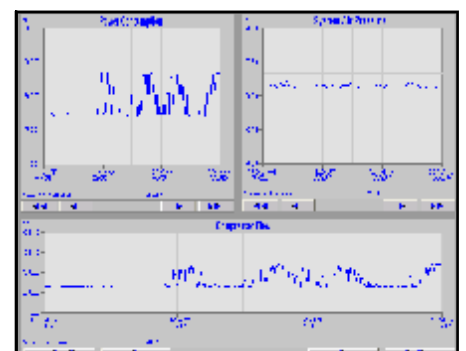
System View



Compressor View



P & ID View



Panel View

©BayView, Bay and ProTech are registered trademarks of Bay, LLC.
 ©Copyright 1999, 2001 Microsoft and Windows NT are trademarks of Microsoft Corporation. Wonderware is a trademark of Invensys plc. Intellution is a trademark of GE Fanuc International and RSView is a Trademark of Rockwell Automation.

